

Tofte Skov *2012-2015*



by
Keld Jensen

Tofte Skov

2012-2015

The southern part of Lille Vildmose consists of The Tofte Skov. Tofte Skov was in my teen years a closed reserve. For the sake of a population of red deer and wild boar the whole area was fenced in.

Today, there are good opportunities to get into the former reserve, and it is for me every time an amazing experience. A combination of forest areas with high moorland, large overgrown dunes on the seaside and in the north-eastern part for miles around a raised bog. The reserve is still home to a population of red deer and wild boar. In the forest the white-tailed eagle has its nest, too.

I have on several occasions had the opportunity to visit the area with my older brother who had to carry out various studies in the area. The terrain out on the raised bog is quite a challenge. Here we experience mound by

mound as far as the eye can reach, and the large gaps between the mounds are often filled with water and covered with high heather.

Out here on the bog my favourite bird breeds, the curlew. It is shy bird, and I have never been lucky to get within shooting range to the bird with my camera. In the wet part of the bog, we find many places with the flycatcher. This plant, which catches insects, stand close together between the heather plants, waiting for a poor insect must choose to touch one of its tentacles.

In the forest large areas of the vegetation under the trees consist of the big, beautiful bracken. The brackens provide good hiding places for wild boars with their small striped piglets when it is necessary for them to find peace.

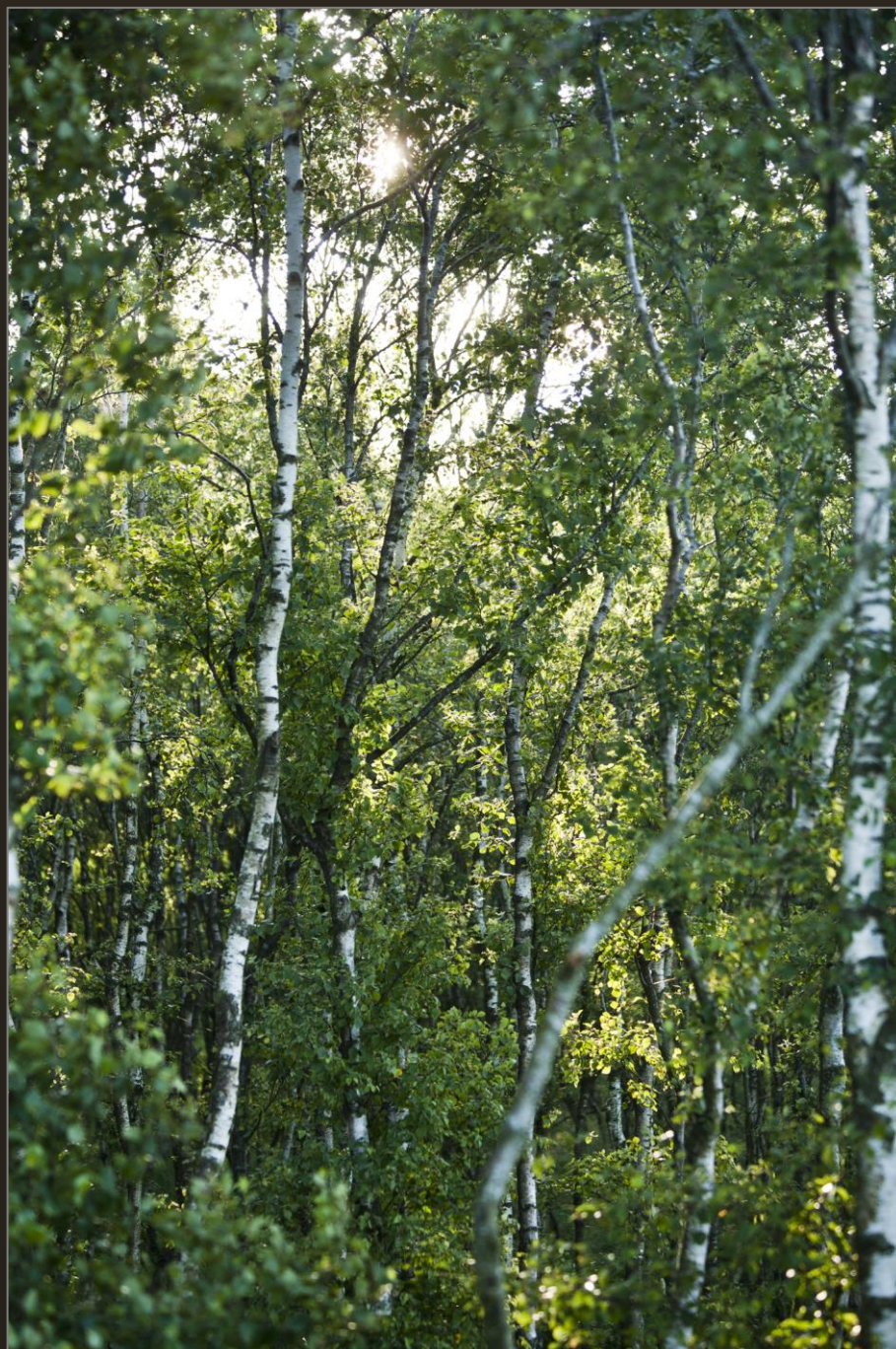


Quit

Tofte Skov

Thumbnails





July 2012

Quit

Tofte Skov

Thumbnails





July 2012

Quit

Tofte Skov

Thumbnails





July 2012

Quit

Tofte Skov

Thumbnails





July 2012

Quit

Tofte Skov

Thumbnails





July 2012

Quit

Tofte Skov

Thumbnails





July 2012

Quit

Tofte Skov

Thumbnails





July 2012

Quit

Tofte Skov

Thumbnails





December 2012

Quit

Tofte Skov

Thumbnails





December 2012

Quit

Tofte Skov

Thumbnails





December 2012

Quit

Tofte Skov

Thumbnails





December 2012

Quit

Tofte Skov

Thumbnails





December 2012

Quit

Tofte Skov

Thumbnails





December 2012

Quit

Tofte Skov

Thumbnails





December 2012

Quit

Tofte Skov

Thumbnails





December 2012

Quit

Tofte Skov

Thumbnails





June 2015

Quit

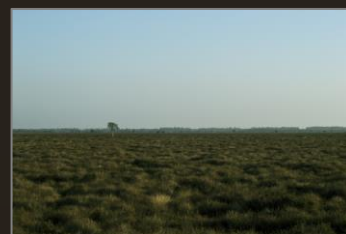
Tofte Skov

Thumbnails



Thumbnails

Click on a thumbnail image below to view it full size.



COLOPHON

Tofte Skov
2012-2015

By Keld Jensen

PDF Version 1.0
Originally Published November 2015

All images and text © 2015 Keld Jensen